



MIDDLEBURG CIVIC ASSOCIATION

2017 LIGHTED CHRISTMAS PARADE REGISTRATION & WAIVER

December 2, 2017 @ 6:30PM

This is a mandatory registration & waiver form. No participant is allowed to join the parade unless this form has been turned in to the parade officials at check in and signed acknowledging they have received a copy, read and agree to follow the rules. A parade pass will be issued at line up to be placed on your vehicle window front passenger side. Mail this form with payment and bring a copy to line up to give to attendant when they come to your vehicle.

Responsible Party Name: _____

Group/Business Name: _____

Email Address: _____

Driver: _____

Cell Phone: _____

Number of Vehicles: _____ Estimated Number of People _____

Every entry must pay. 1 entry= 1 vehicle w/ attached trailer/float, 1 vehicle, 1 motorcycle, 1 golf car, 1 horse, or walker group without a float. Each entry may have a safe number of people on vehicle/float.

NOTHING IS TO BE THROWN FROM A VEHICLE IT IS UNSAFE!!!!!!!!!!

Mail postmarked by November 11th _____ \$ 25.00 Members

_____ \$ 30 Non-members

Paid at line up by exact cash _____ \$ 35.00 at line-up

Mail check to PO Box 147, Middleburg FL 32050

Please email your RSVP to MiddleburgCA@gmail.com and let us know what date your check payable to Middleburg Civic Association is mailed or that you will be paying at line up.

***NOTE: ALL CHILDREN 12 years of age & under MUST be accompanied by ADULT supervision throughout the parade whether walking or on a float. EVERYONE MUST KEEP UP WITH THE PARADE. NO SLOWING DOWN AND LEAVING GAPS IN THE PARADE.**

By signing I have read the event rules and will ensure that everyone in your group is aware of and will abide by the rules. Having been granted authority to speak and sign on behalf of this group, I hereby release the Middleburg Civic Association from all responsibility and absolve the same from any claim if loss, damage or injury of any nature to persons or property resulting from or in conjunction with our participation in this event. I also understand that our group may be held legally liable for the actions of our members.

Sign: _____ Date: _____

PRINT NAME CLEARLY PLEASE: _____

2017 Lighted Christmas Parade Information

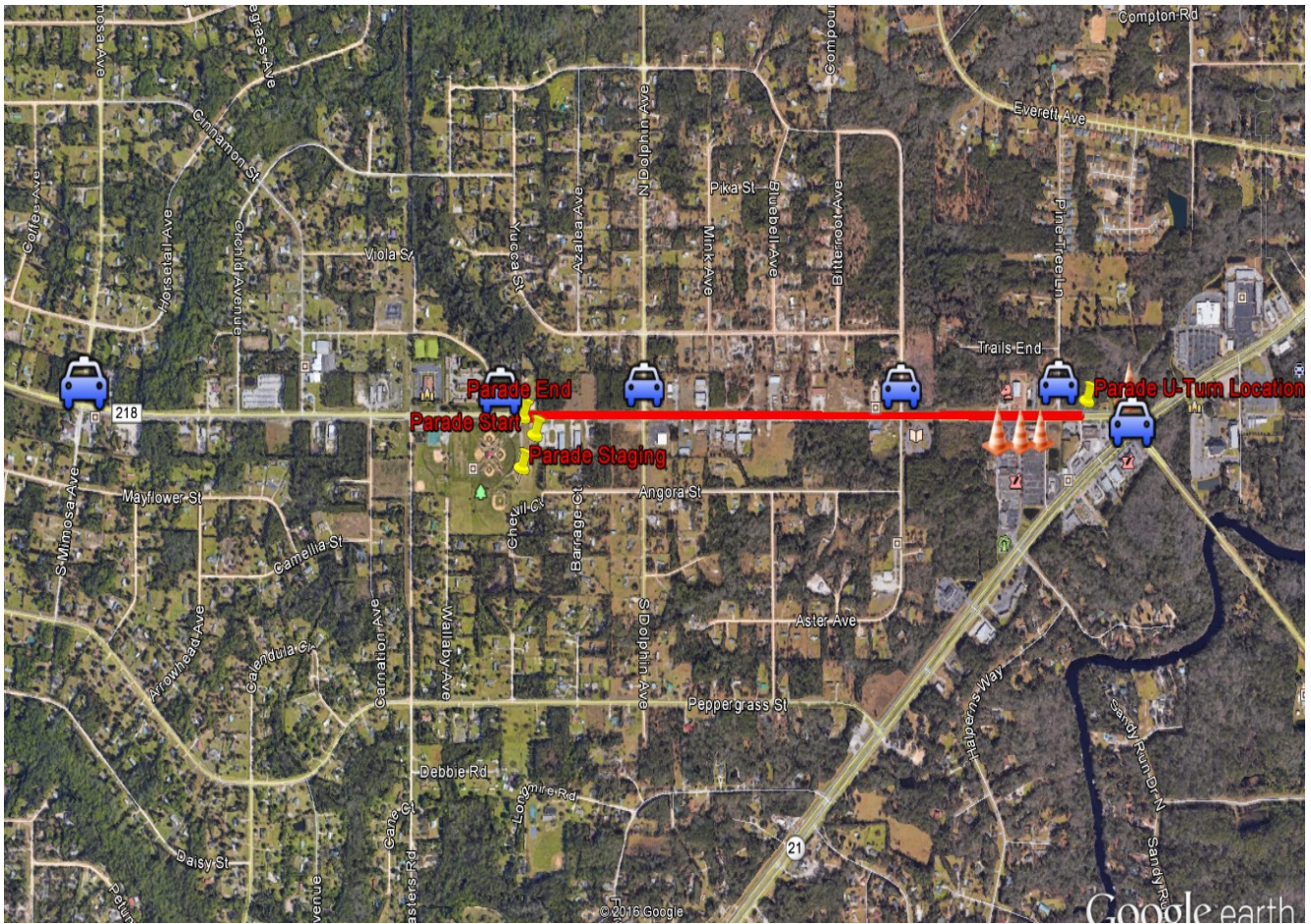
December 2, 2017 Set-up at 4:30PM, Starts at 6:30pm

Middleburg Civic Association Parade Rules

Everyone is invited to participate as long as your entry is "FAMILY FRIENDLY".

- 1) Line up times are posted at www.MiddleburgCivicAssociation.com for each event.
- 2) All Floats MUST be decorated prior to arriving at line up. All Floats must be decorated with LIGHTS! NO DECORATING IN PARKING LOT ALLOWED. ANY VEHICLE NOT IN PARADE MUST PARK ELSEWHERE. **ANY VEHICLES LEFT PARKED AT OMEGA PARK WITHOUT A PASS MAY BE TOWED AT OWNERS EXPENSE.**
- 3) DROP OFF is over by the Omega park play ground and tennis court area. Please meet your group at your float in line and unload children at and walkers in the tennis court area of the park. **PICK UP FOR WALKERS WILL BE AT WINN DIXIE OR HAVE THEM MEET YOU BACK AT OMEGA PARK.**
- 4) Floats ready for lot entry may enter via the entrance closest to the ball fields. Follow signs.
- 5) **Candy & Marketing materials must be handed out by walkers, not thrown from float.** It is a road violation and entices children to run into traffic rising injury. --Driver will be liable. If caught, you will not be allowed in future events.
- 6) Follow all directions for the Sheriff's office and Parade Officials.
- 7) **Registration:** Print the registration form, mail your payment, and **bring a copy of your completed form and copy of check with you at line up.** You will need to provide 2nd copy to line up official who comes to your float. Entry official will come to your vehicle to line up and collect the form and payment if not mailed in previously. Pay by Cash or Check payable to Middleburg Civic Association. Parade official will give you your parade pass at lineup when you provide copy of signed waiver/rules.
- 8) Animals: ALL animals except horses must be on a float or in a vehicle including dogs.
- 9) Horses: Horses, Horse Trailers and their floats line up in the back side of the parking lot. Follow Signs. Only enter horses that are well experienced around crowds and loud music/noises/motorcycles/generators. Must provide a person for Clean up of Poop!
- 10) Know where you will meet your group before and after the parade. NO DROPPING OFF IN PARKING LOT. DROP OFF AT DESIGNATED AREA BY THE PLAYGROUND.
- 11) **Viewing the parade is from BOTH SIDES of CR 218 FROM Omega Park to Winn Dixie.** If children are in the road please have the walking adults in your group instruct them to get back on the sidewalk. This will reduce the risk of a child spectator being injured!!! We really need your help with this!!!!
- 12) **Parade Route:** PARADE BEGINS IN THE OMEGA PARK PARKING LOT. TURN RIGHT INTO THE EAST BOUND LANE TOWARD BLANDING ONTO 218 AND PROCEED UNTIL YOU REACH PARADE ENDING AT WINN DIXIE. THE FLOAT RETURN ROUTE WILL THEN WAIT UNTIL ALL FLOATS HAVE REACHED A STOPPING POINT WHERE YOU WILL BE DIRECTED TO MAKE A U-TURN AND PROCEED INTO WEST BOUND LANE TO RETURN TO OMEGA PARK. If you choose to meet your group on the back streets, please move your float from the road way so others can keep moving.
- 13) Entry fees are per Vehicle, Float, Horse, or Walking Group (No exception everyone pays)
- 14) Tractors or Trailers too big for lot will be lined up in the median in front of parking lot on 218.
- 15) Porto Potties are located in the back corner of the parking lot. Be sure you are all at your float in time to start. Parade pulls out on time.
- 16) Trash: NO Trash can be left in the parking lot or we cannot use it, this means no parades in the future. Help pick up any trash you see after the parade! DO NOT LEAVE TRASH!!!
- 17) Stay with the Float in front of you, no gaps, safe space, no big gaps, your walkers can run and catch up with you, keep moving.
- 18) RSVP by emailing that you have read the rules and printed the registration MiddleburgCA@gmail.com to let us know if you have mailed fee or paying at line.
- 19) Large walking groups will be placed at the end of the parade to keep the parade moving at a safe speed. Please have your walkers keep up with the floats. Adults will need to supervise all children. For Safety, ALL Walkers must be lighted.
- 20) **ALL Drivers must attend driver meeting before parade begins.**
- 21) **Parade is two-sided so drivers must stay in the right lane when driving so they don't crash with returning**

floats.



Parade begins in the Omega Park Parking lot on CR 218. Turn Right towards Blanding Blvd into the East bound lane on CR 218 . Proceed along CR 218 until you reach parade ending point at Winn Dixie. You will be directed to wait until entire parade reaches a stopping point. The float return route continues by making a U-turn on CR 218 and returning on the West bound lane back to Omega Park.